

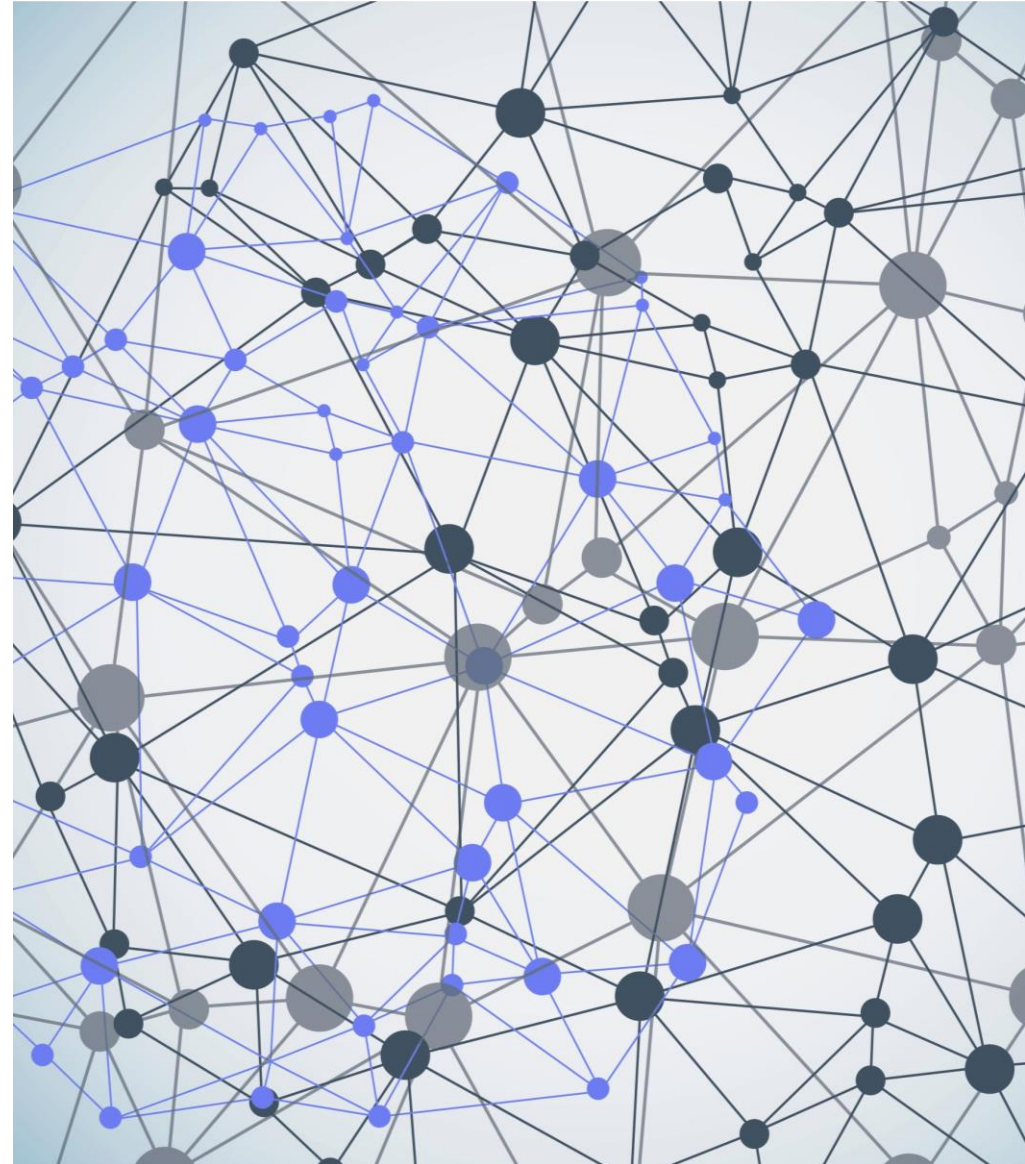
*How sustainable  
are we really? The  
challenge of  
understanding the  
climate impact of  
libraries*

---

Tom Shaw

Deputy Director, Libraries & Collections

King's College London



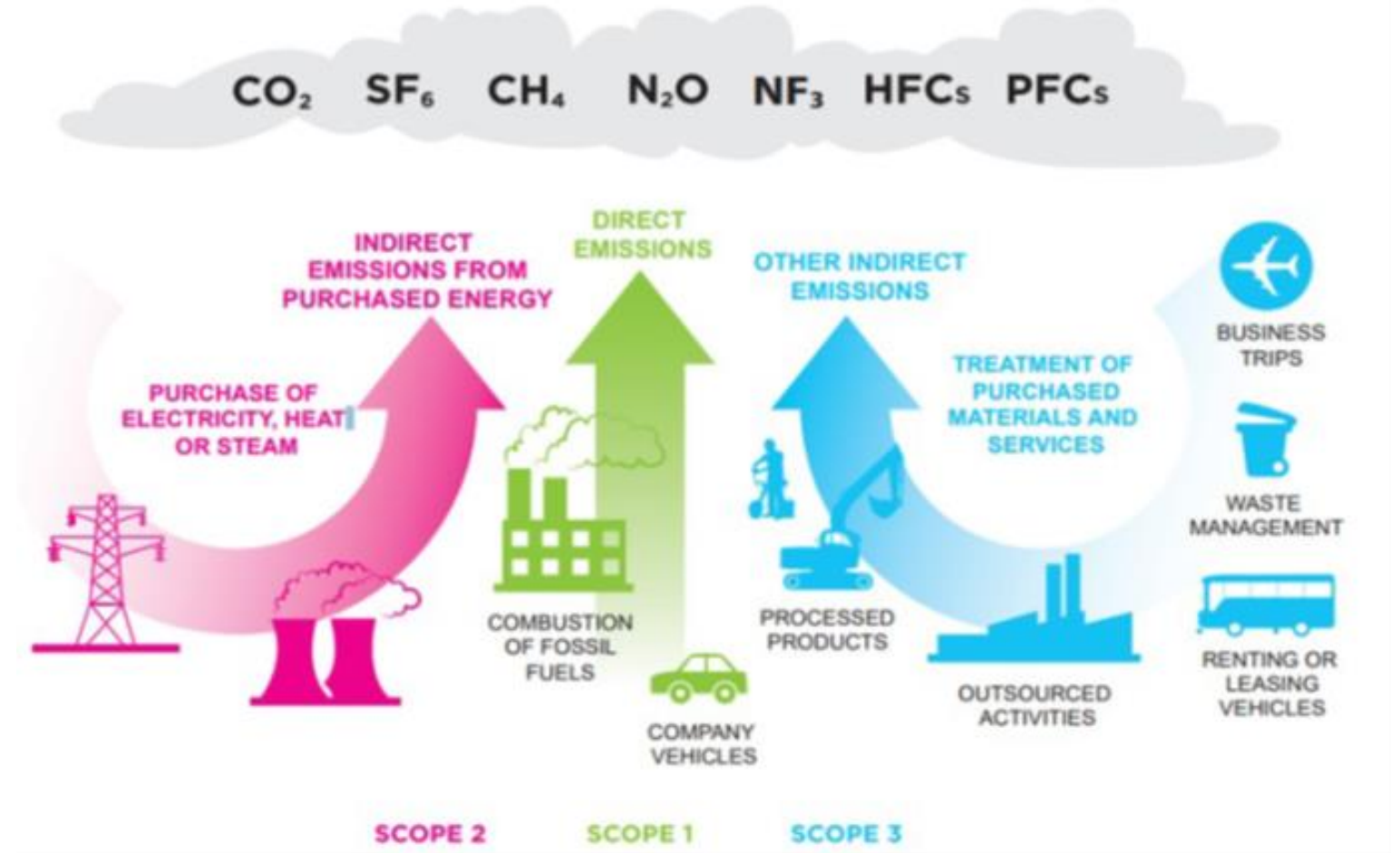
What do we  
even mean by  
sustainability?

---




# The climate crisis and universities

---



# Understanding our climate impact



*Understanding our climate impact with sufficient accuracy is just as important as taking action to reduce it*

How do we  
know that  
we are  
having a  
positive  
impact?





# Digital and the climate crisis

---



# AI and the climate crisis

---





# Digital v print

---





# What can we actually do?

Incorporate sustainability into everything we do

Place sustainability within the library's strategic vision

Creative opportunities for staff at all levels

Try to establish the real impact of sustainability actions...

- ...but it's for the that to be good enough

Partnership working:

- Procurement
- Estates
- Library sector and vendors